

**SESSION n°7: HEALTHY BUILDINGS**

**Design  
& Health**  
International Academy for Design and Health

**Milano, Italy 11-14 April 2024**

**Design & Health**

**13TH WORLD CONGRESS & EXHIBITION**

**REVITALIZING HEALTH BY SALUTOGENIC DESIGN**

**Healthy environment | Healthy people**

**Healing Architecture**

**Six case studies of room renovations**

**Andrea Möhn**

**AM\_A Andrea Möhn Architects / [mohn@am-a.eu](mailto:mohn@am-a.eu)**



**POLITECNICO  
MILANO 1863**

**DIPARTIMENTO DI ARCHITETTURA,  
INGEGNERIA DELLE COSTRUZIONI  
E AMBIENTE COSTRUITO**

MEDIA PARTNER

**Progettare  
per la Sanità**  
Organizzazione, tecnologia, architettura

**edra** | SANITÀ 33

SPONSORS

**Gerflor**

**REair**

**Deerns**

**cneto**  
CENTRO NAZIONALE  
EDIZIONE  
TECNICA  
OPERATIVA

WCDH 2024 April 13 2024  
Andrea Möhn

# Healing Architecture

six case studies of room renovations of clients with intellectual disabilities and challenging behavior in long-term care facilities

AM\_A  
ANDREA MÖHN ARCHITECTS

# AMLA

# ANDREA MÖHN ARCHITECTS





**Dolf's Room**









Identity



**Identity**



**Overview -> feeling safe**



**Natural materials**

**Dignity**

**-> feeling like a normal person**

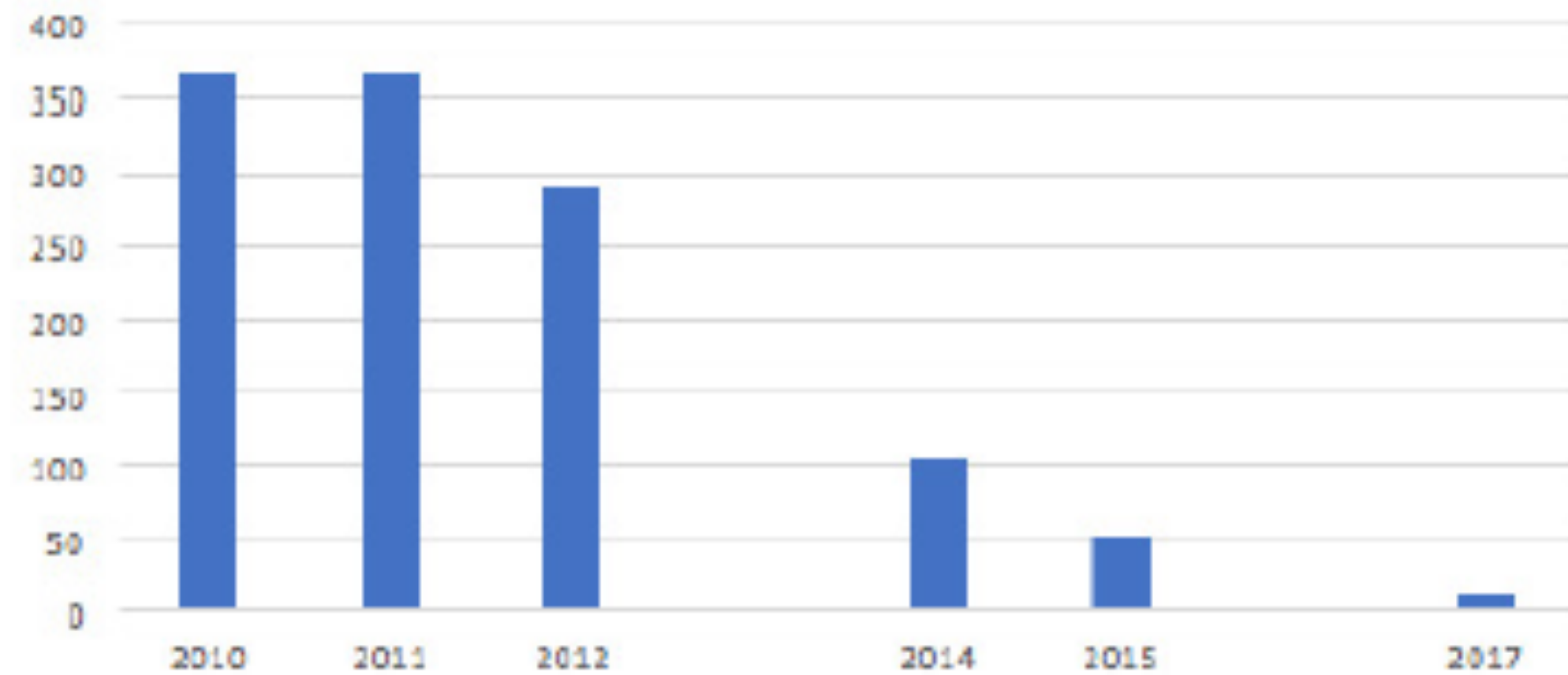


**Self-Determination**





## Seclusion in the room

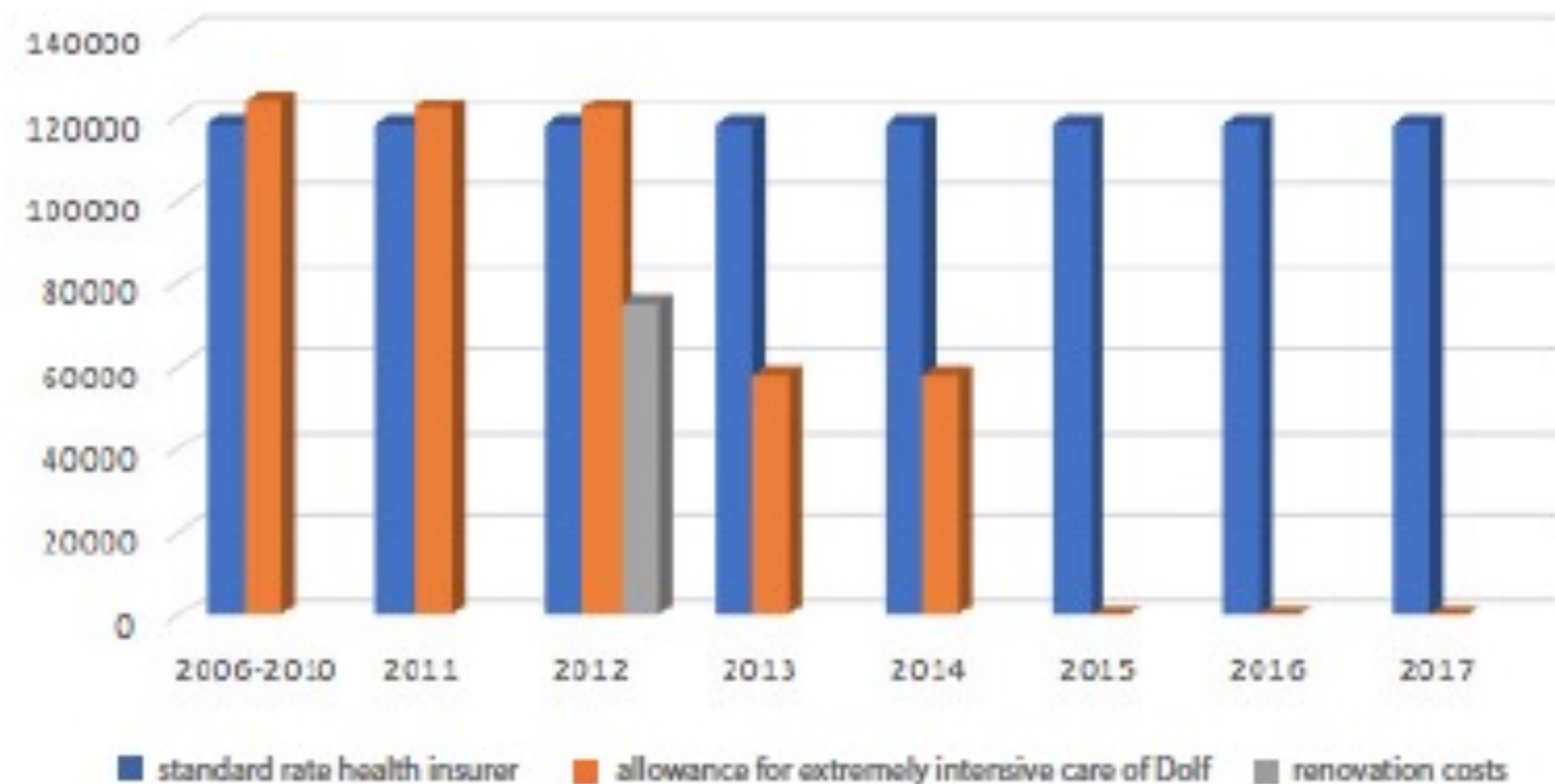


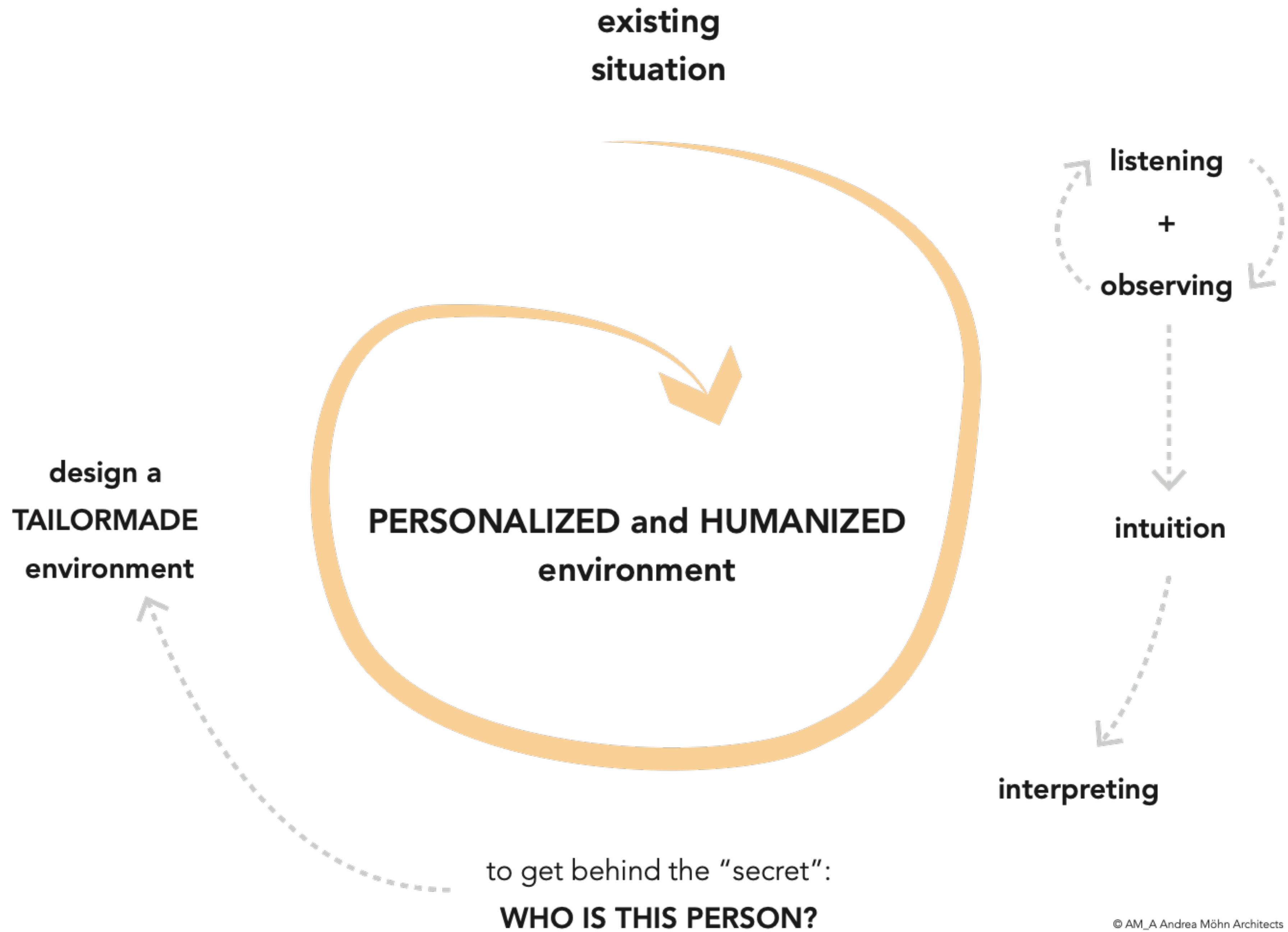
Seclusion in the room with the door locked to unwind and settle down.  
The number shown is the number of times per year that the isolation was applied.  
*(The duration can vary from 10 minutes to an hour)*



## Renovation costs

Design costs	€ 20.000
Material	€ 25.000
Construction costs	€ 30.000
<hr/>	
Total	€ 75.000









Andrea Möhn

## Ein Zimmer für Dolf

Raumgestaltung als Therapieansatz



- Roos, J., Möhn, A., Ponsioen, A., & Didden, R. (2024), Redesigning Rooms of Clients With Intellectual Disabilities and Severe Behavioral Problems in Long-term Care Facility: Three Case Studies, *Journal of Developmental and Physical Disabilities*, DOI: [10.1007/s10882-024-09955-7](https://doi.org/10.1007/s10882-024-09955-7)
- Möhn, A., Roos J.L., Mulder A. (2022), 'A new approach for the living environment of people with behavioral problems', conference paper, published by TU Delft OPEN, DOI:10.24404/621cb161a03fefa3b272b9cc
- Leuenberger, T. & Möhn, A. (2022), Ein Zimmer zum Wohnen - Eine architektursoziologische Perspektive auf die Gestaltung von Lebensräumen in der Psychiatrie, *Soul in Space. Psychiatrie trifft Architektur*, Hrsg. L. Hofrichter, M. Köhne, A. Kuckert-Wöstheinrich bei der MMV Medizinisch Wissenschaftliche Verlagsgesellschaft GmbH & Co. Kg., Berlin, ISBN: 978-3-95466-693-5
- Möhn, A. (2021), Best Practice: A Personalized and Humanized Environment, conference paper, Connected Living, *Frankfurt University of Applied Sciences*, S. 117-126, DOI: 10.48718/98d5-zp59. ISBN: 978-3-00-070050-7
- Möhn, A. (2021), Ein Zimmer für Dolf, *der architekt BDA #4*, S.32-37

# Research

# Physical environment, a fixed value in our care: tailor-made spaces for mentally disabled clients

## Background

- **target group:** mentally disabled clients with behavioral problems in longterm facilities

- **research:**

By healthcare facility Ipse de Bruggen (the Netherlands)



Researcher: Jacqueline Roos.

Impact of the built environment on patients with intellectual disabilities and staff.

### Literature review

Roos, J., Koppen, G., Vollmer, T. C., Van Schijndel-Speet, M., & Dijkxhoorn, Y. (2022). Unlimited Surrounding: A Scoping Review on the Impact of the Built Environment on Health, Behavior, and Quality of Life of Individuals With Intellectual Disabilities in Long-Term Care. *HERD: Health Environments Research & Design Journal*, 15(3), 295-314. <https://doi.org/10.1177/19375867221085040>

### Multiple case study

Möhn, A., Roos, J. & Mulder, A. (2022). A new approach to the living environment of people with intellectual disabilities and severe behavioural problems in long-term care [preprint]. *The Evolving Scholar | ARCH22*.

<https://doi.org/10.24404/621cb161a03fefa3b272b9cc>

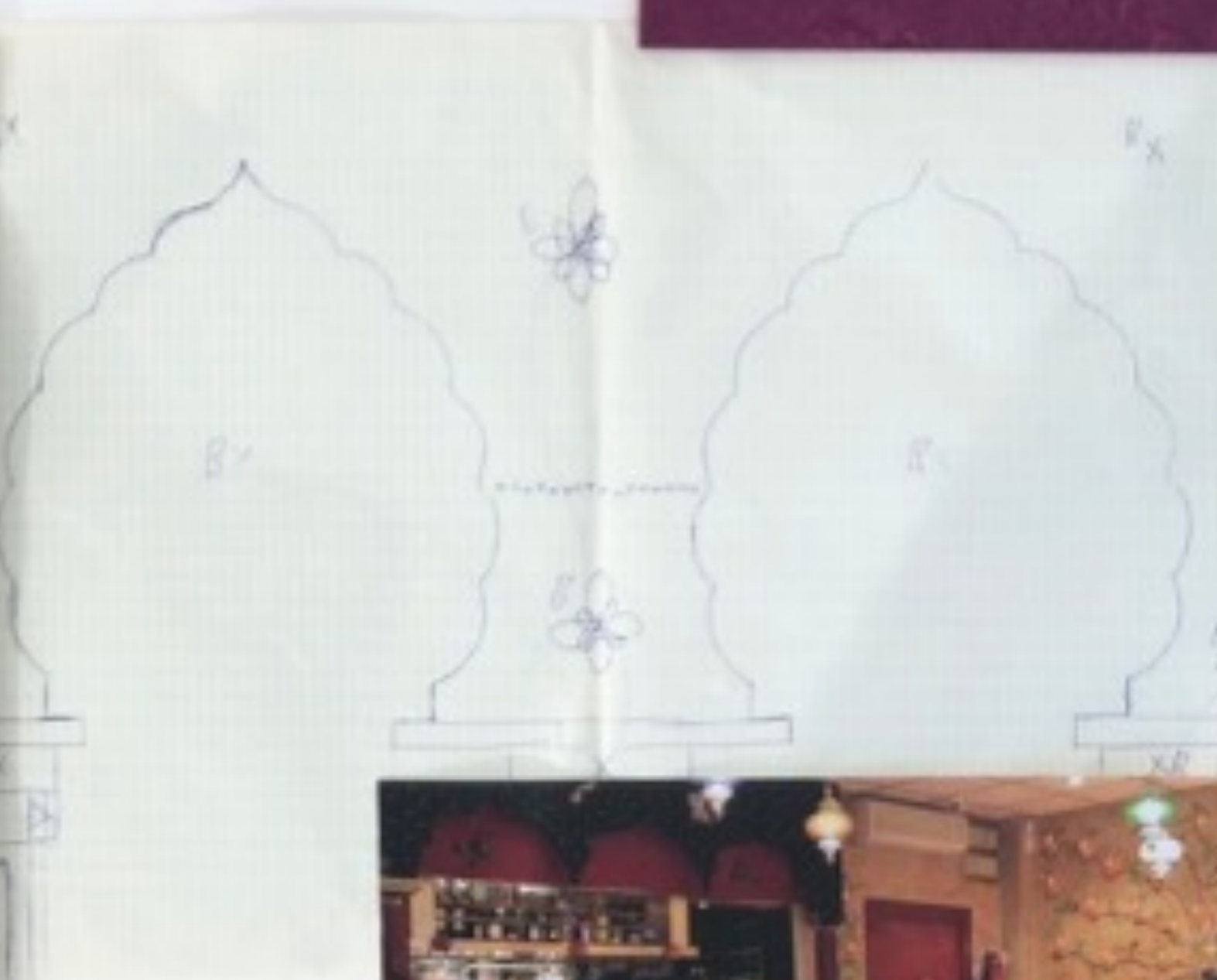
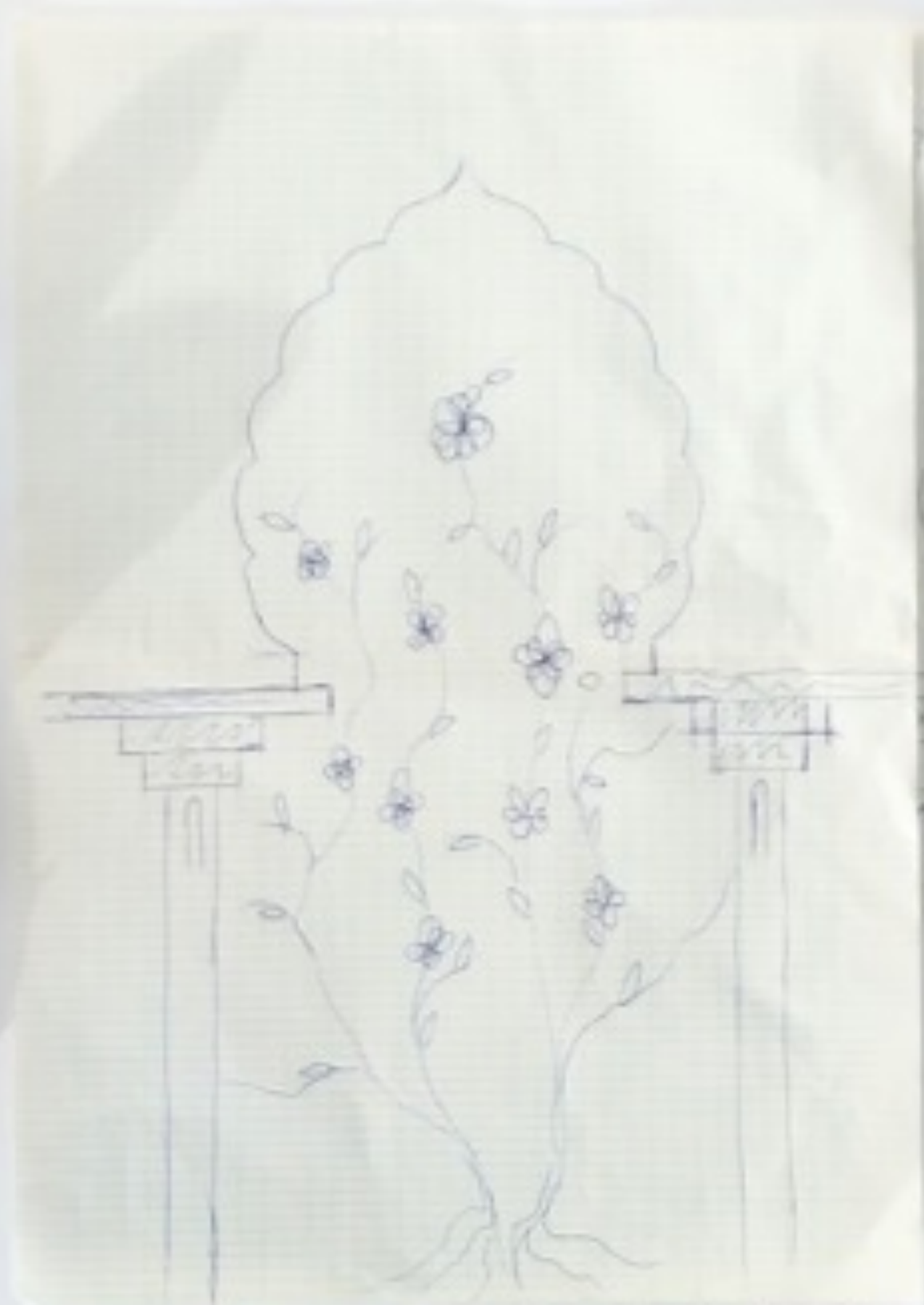
Roos, J., Möhn, A., Ponsioen, A., & Didden, R. (2024), Redesigning Rooms of Clients With Intellectual Disabilities and Severe Behavioral Problems in Long-term Care Facility: Three Case Studies, *Journal of Developmental and Physical Disabilities*, DOI: [10.1007/s10882-024-09955-7](https://doi.org/10.1007/s10882-024-09955-7)



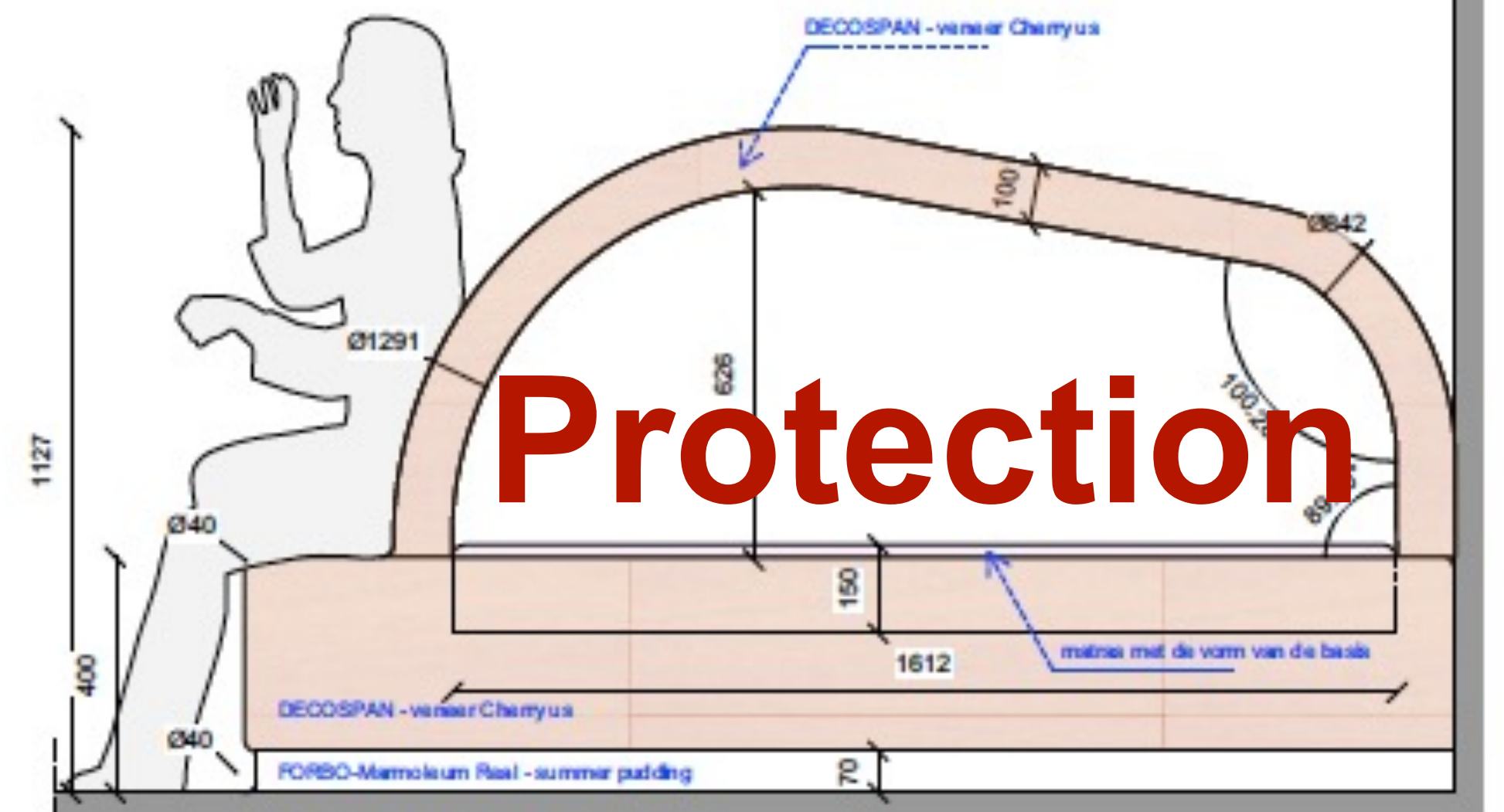
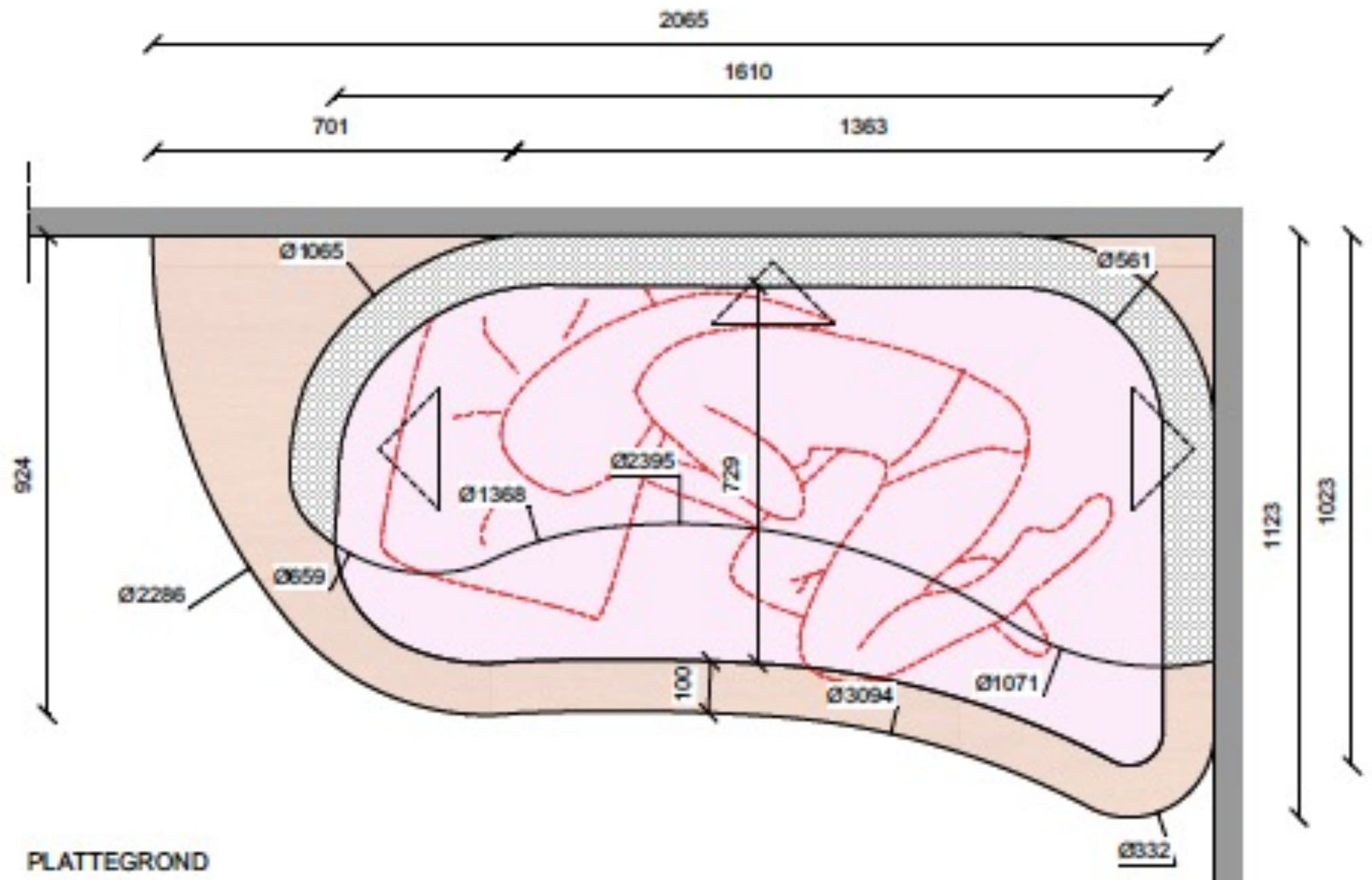
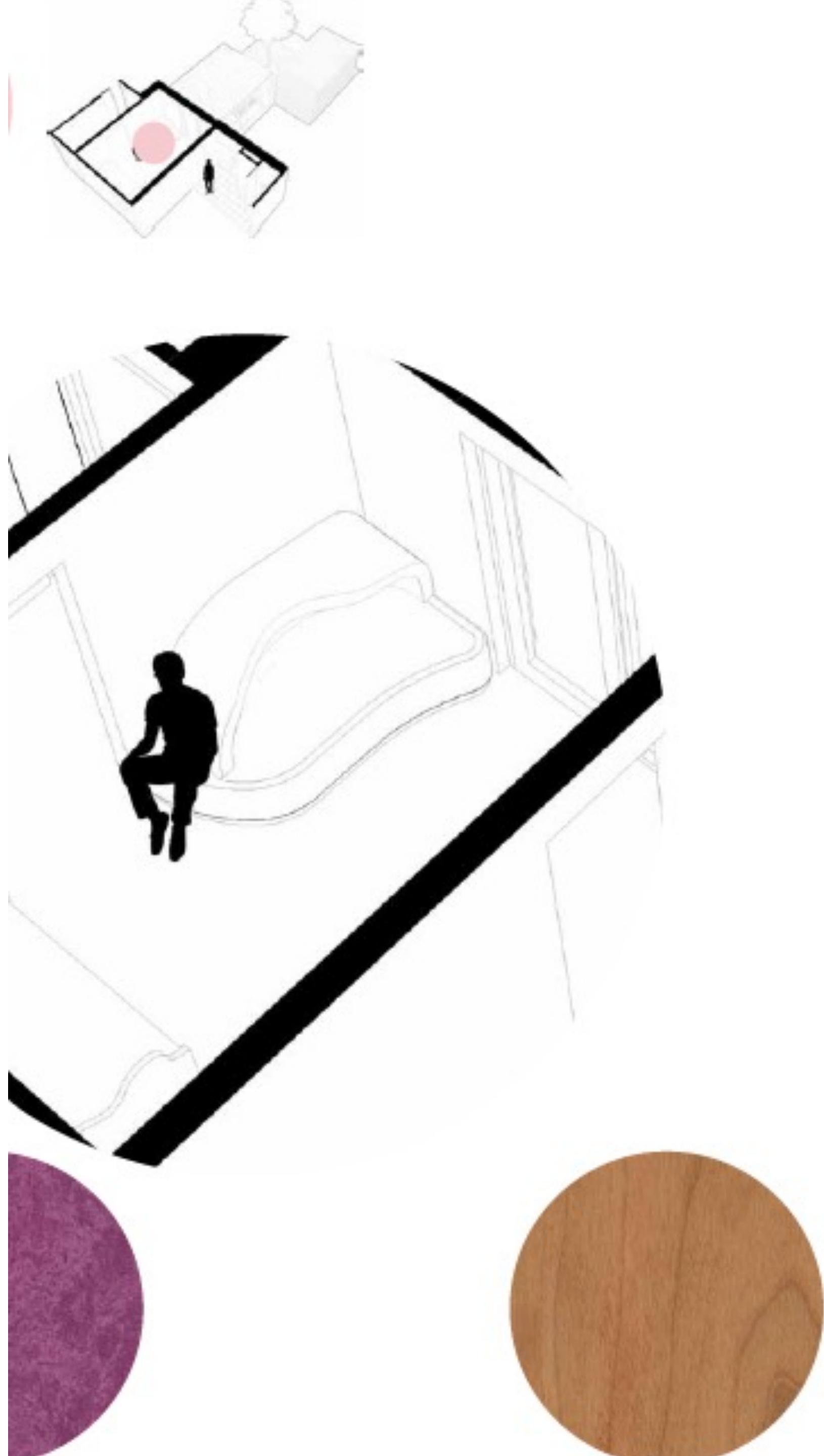
# The Cocoon



**Identity**









**Connection to others  
(physical, visual and auditory)**

**-> Reassurance**





The Forest



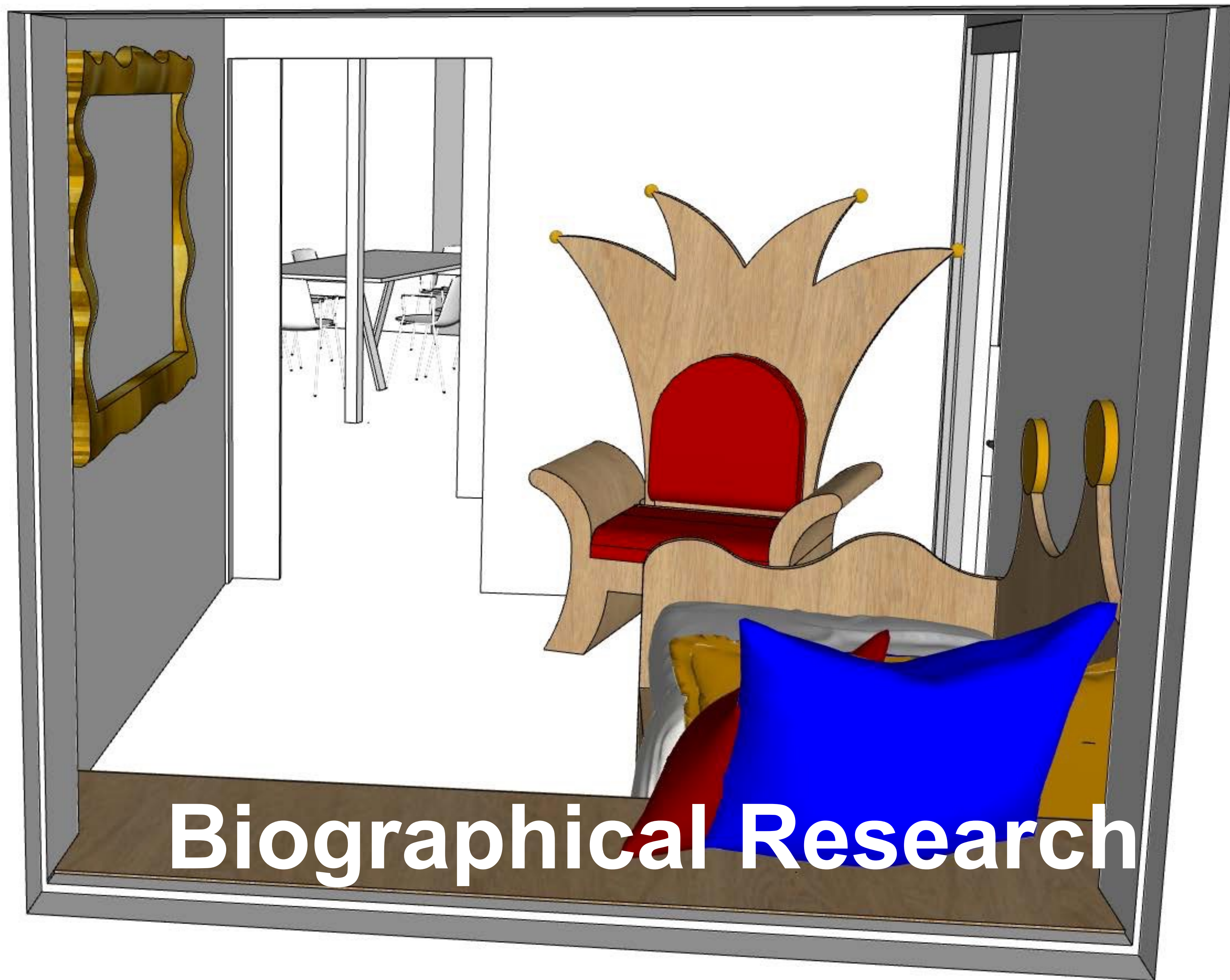


**Smart Solutions**

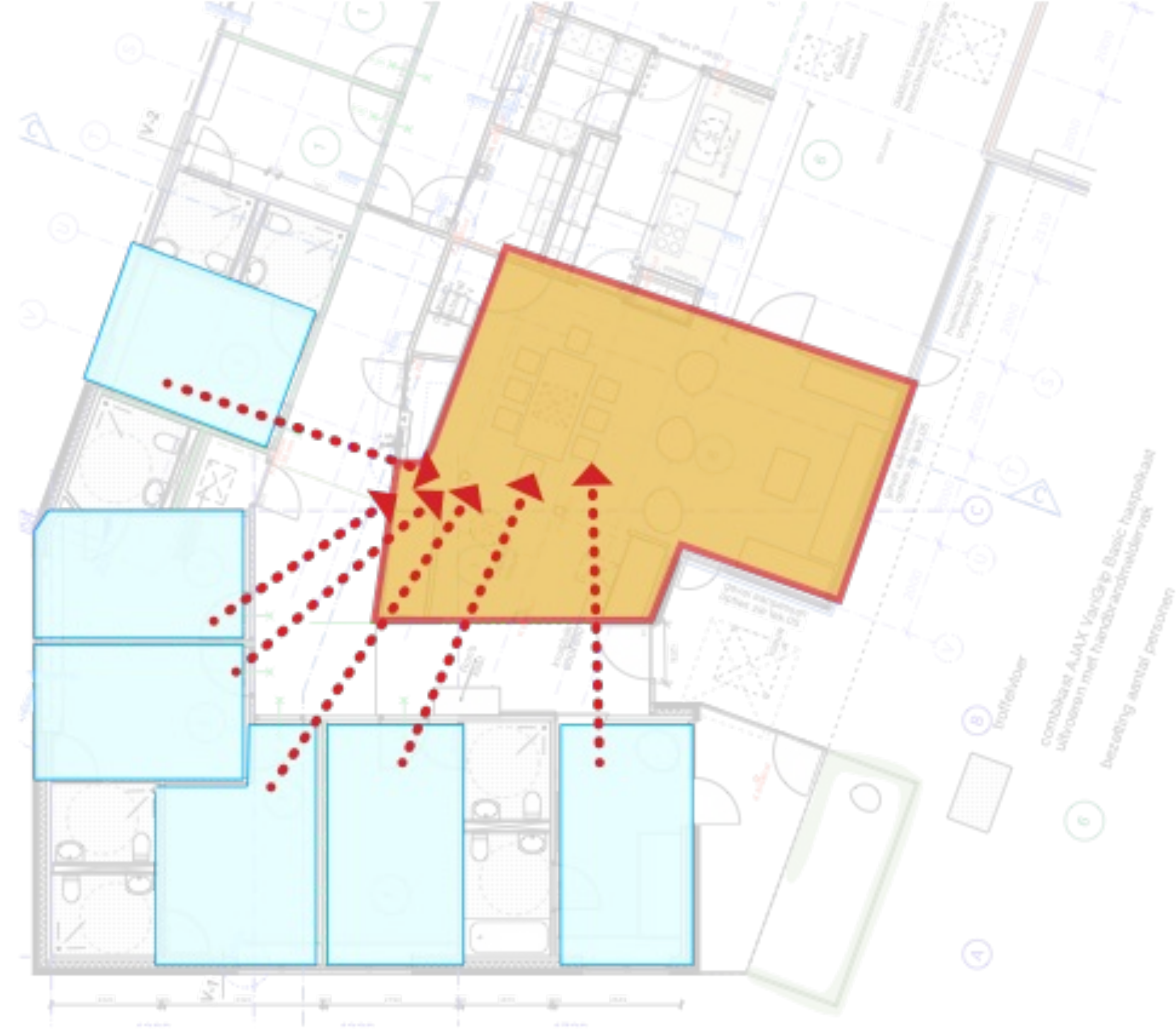


**The Empire**

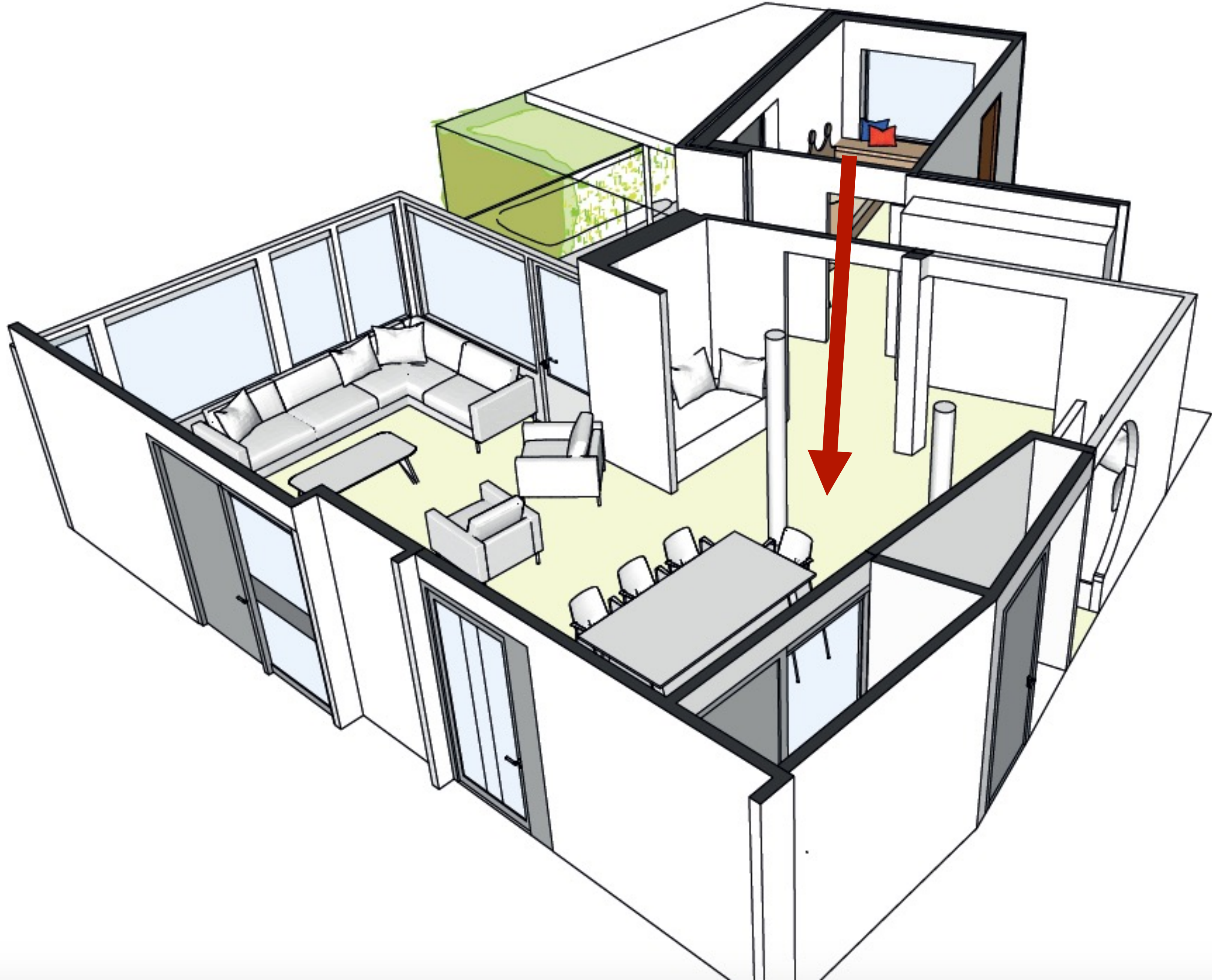


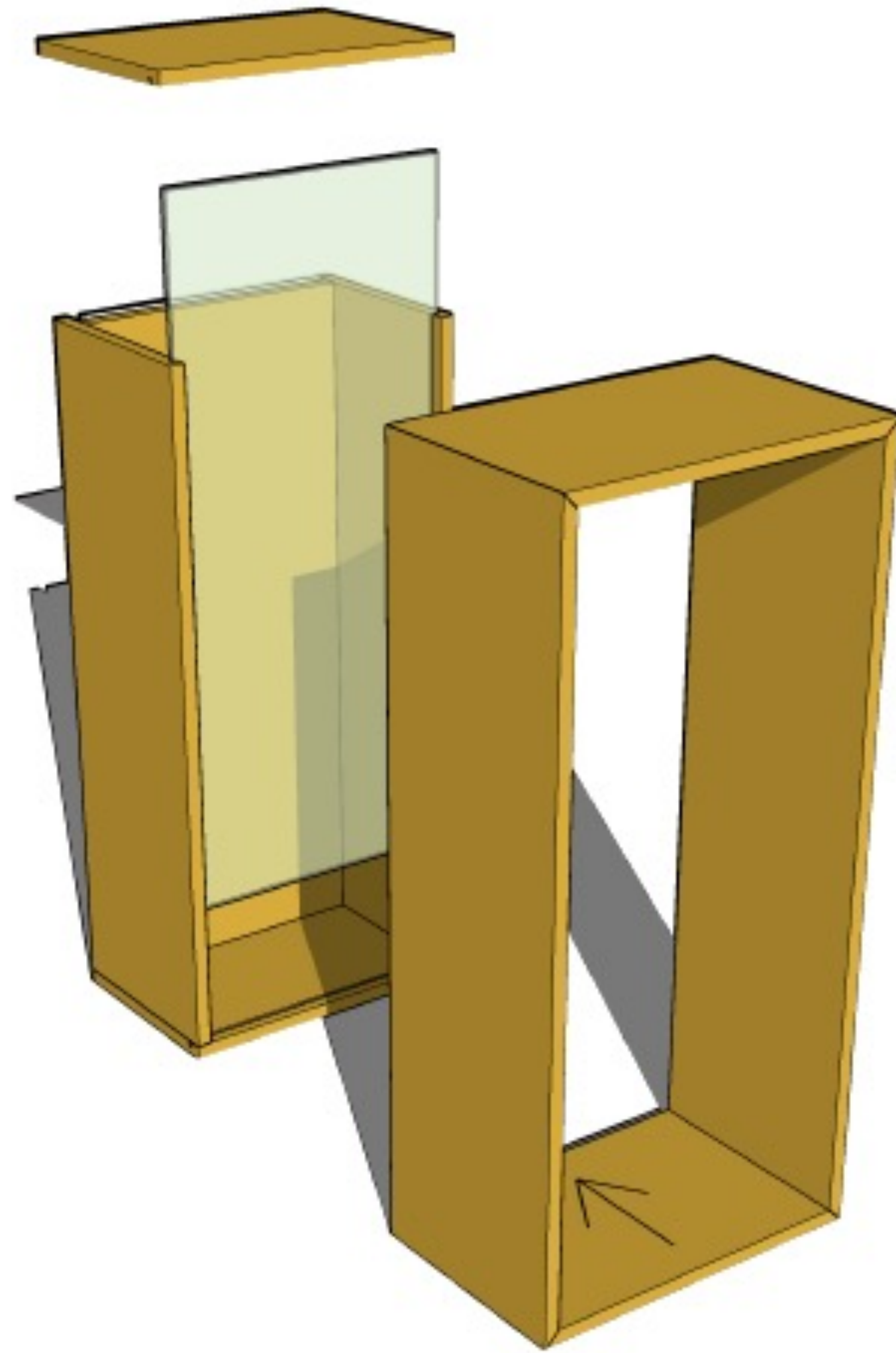


**Biographical Research**



# Overview



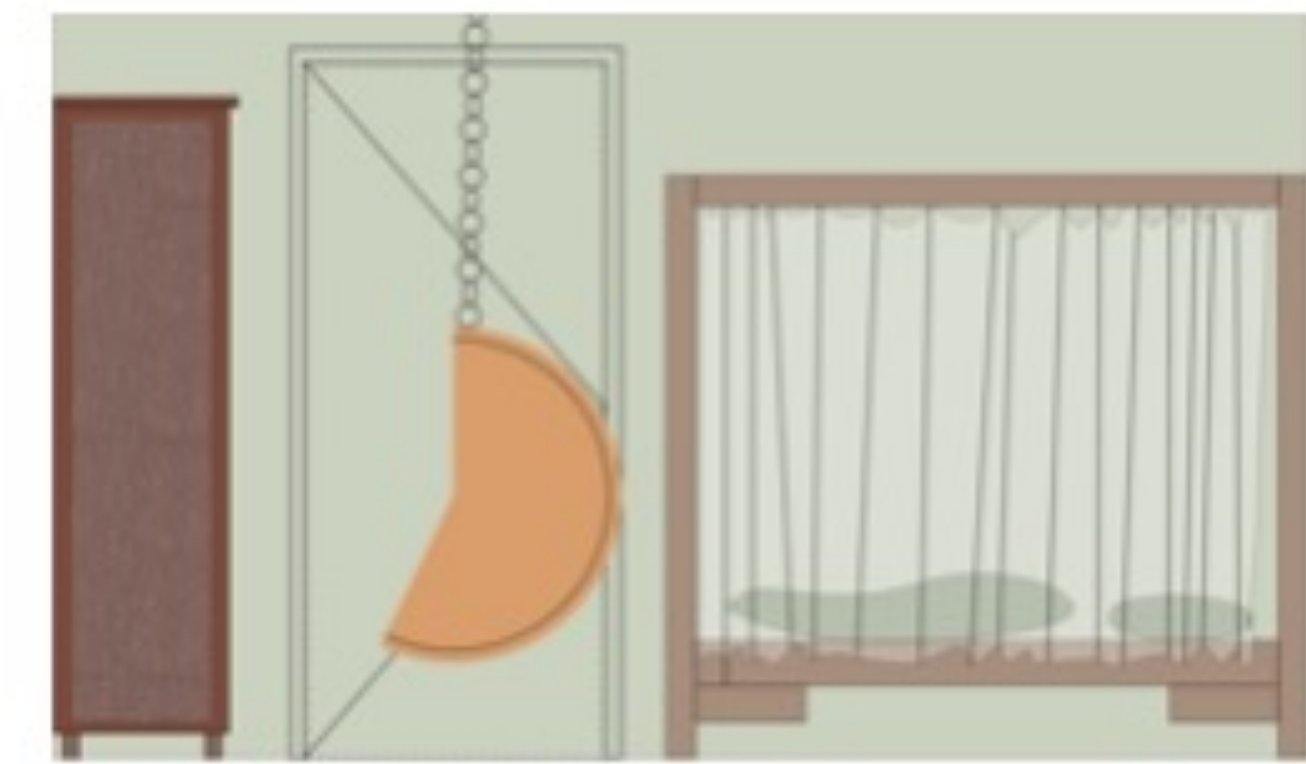


**Personal details**





**The Jungle**









**Familiar  
Sensory  
Experience**



**Wild World**



**Low Key and Low Budget Approach**

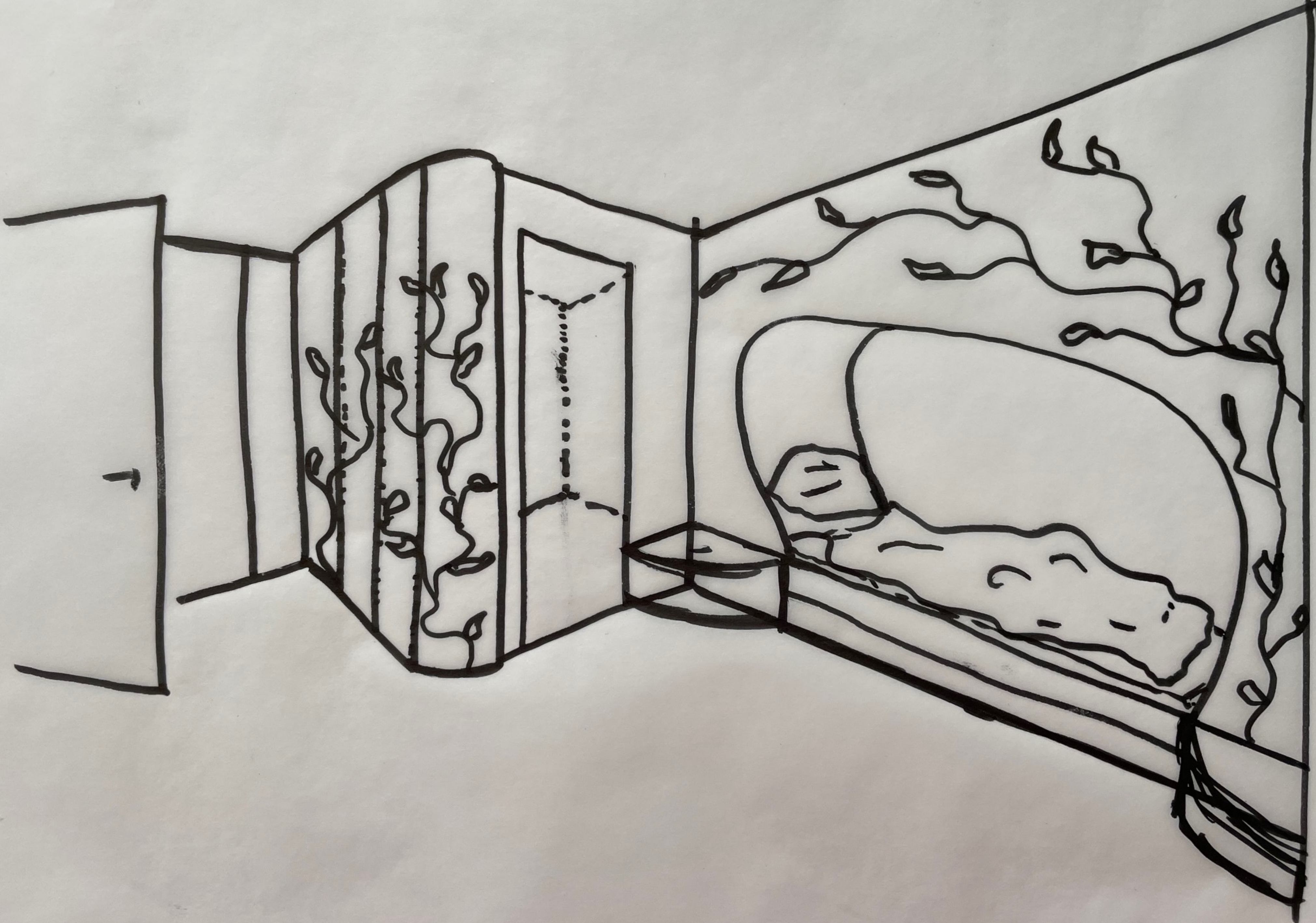








**The Arbor**





A wooden daybed with a curved backrest, a purple blanket, and a patterned pillow. The daybed is made of light-colored wood with a curved backrest and a matching base. It is positioned in a room with a white wall and a purple carpet. A decorative branch with green leaves is visible in the background.

[www.am-a.eu](http://www.am-a.eu)

AMLA  
ANDREA MÖHN ARCHITECTS